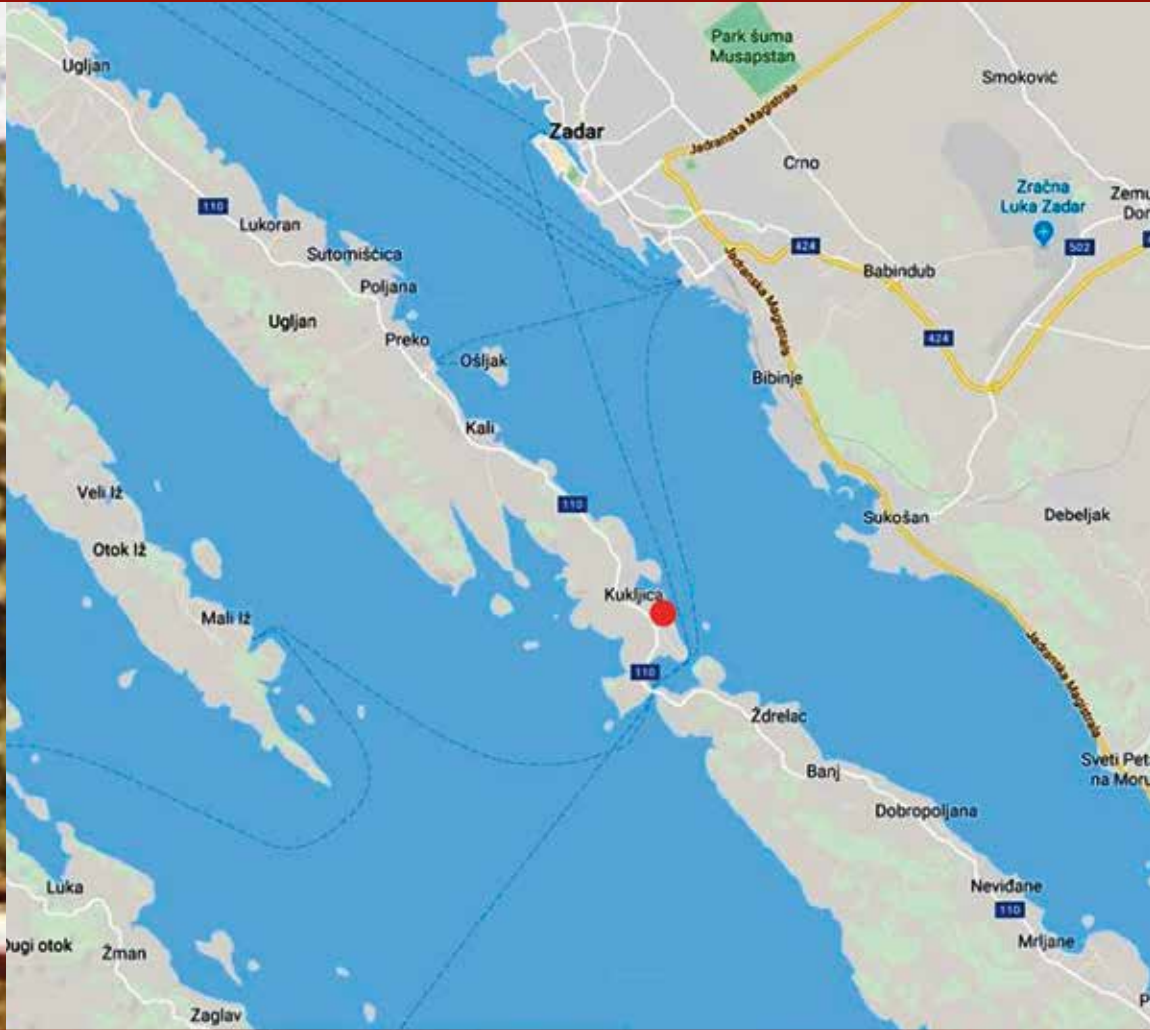
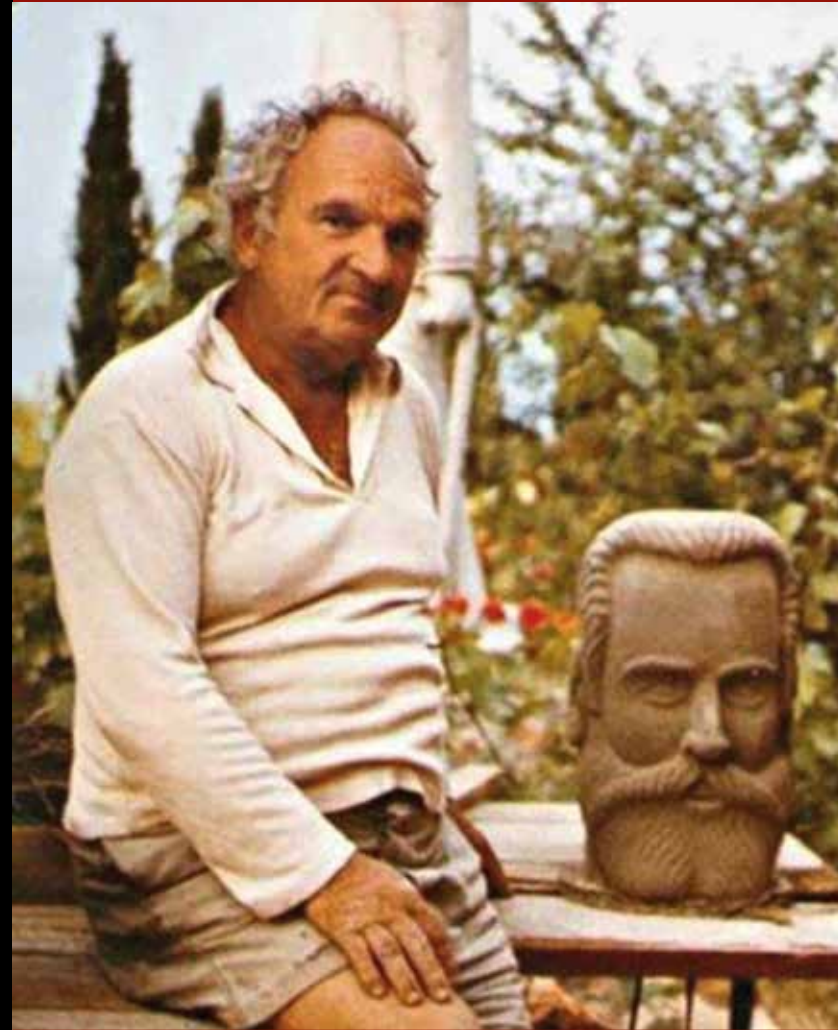


# EDEN SCULPTURE GARDEN IN KUKLJICA

its importance,  
presentation  
and protection



## 1 The basic information about KUKLJICA and EDEN garden

KUKLJICA, a village and small harbour in the south-eastern part of the island of Ugljan, 8 km southeast of Preko; population 868.

KUKLJICA is a picturesque tourist and fishing village on the island of Ugljan near Zadar and the island of Pasman, well connected to the mainland by car ferry.

KUKLJICA attracts its numerous visitors with a traditional procession of ships from Kukljica to church Gospa od Sniga, in the Passage of Ždrelec. Thanks to very good connections with the land, mild Mediterranean climate, clear and clean sea, the proximity of the historic town of Zadar, National Parks and Parks of Nature and numerous cultural events, Kukljica has an important place in the development of tourism in the entire County of Zadar.

EDEN's private garden covers an area of about 2000 square meters. With its small villa KATARINA and 35 large concrete statues among the trees, it is located on the southern edge of the Kukljica village, on No. VIII street, towards the church Gospa od Sniga.

The EDEN garden was created between 1964 and 1994 by autor – **Emilan Grgurić** (1919–1997).

EDEN garden, which is a unique monument to spontaneous artwork, needs to be revitalized and incorporated into the social, cultural and tourist life of Kukljica.

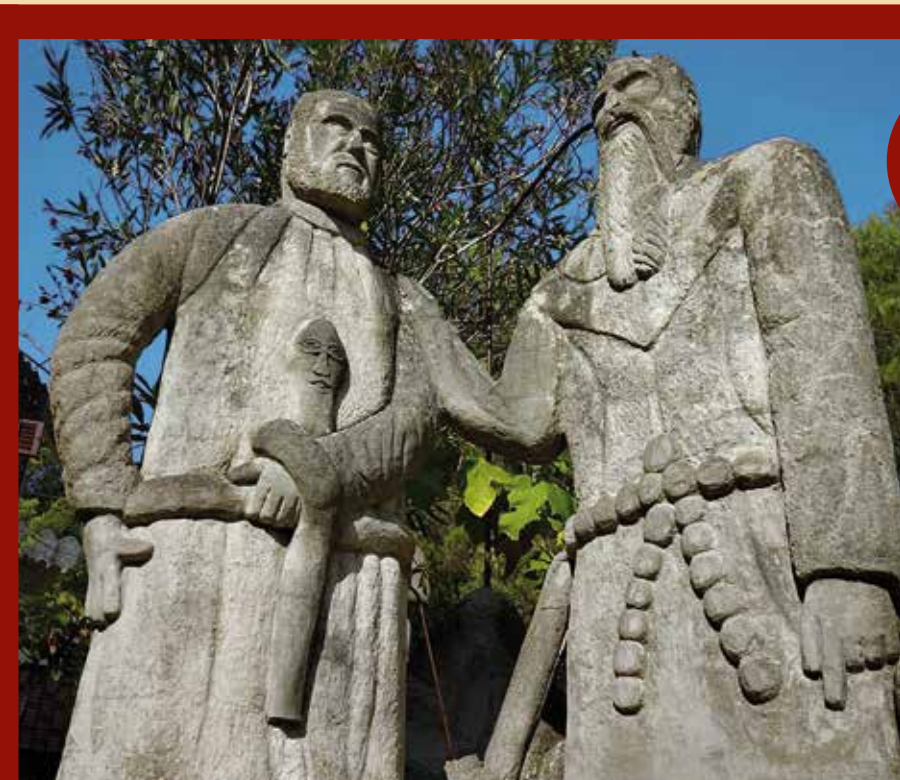


## 2 Meaning and specific features of the garden Eden in Kukljica

The garden EDEN is an authentic sculptural and architectural creation, spontaneous, very creative, special and yet poetic. It is a garden full of symbols, a garden of dreams, a garden linking European and Croatian history with the personal and intimate fate of its creator. He was remarked by mother's loss in childhood. At the age of thirty-two, Katarina died of tuberculosis. This tragic event has become a trigger mechanism for the constant creative activity of the author, who has built for her mother a memorial in the form of a villa with a portrait on the top. This homage to maternal love is in the middle of a gallery of great sculptures of prominent personalities. The beginning and end of human life is the central theme of Emilian Grgurić's tremendous creative effort. The cultural, philosophical and artistic significance of the EDEN garden is comparable to other known gardens of this type in Europe. This should be used to draw local authorities' attention to the potential and other possibilities of using and protecting this unique place.

## 3 The way to save the garden of EDEN is

- making the garden accessible to the public
- its restoration and regular maintenance
- her professional presentation and promotion



## 4 Who can be the initiator of the rescue of EDEN garden

- local authorities (Općina Kukljica in cooperation with the owner of the garden EDEN)
- professional monument protection authorities
- civic independent initiatives also individuals and supporters of spontaneous art



## 5 Challenge

Help with your interest and suggestion to save this unique jewel of Croatian spontaneous art: garden EDEN.

You can send your suggestions to the author of this poster to: [konecny.p@raz-dva.cz](mailto:konecny.p@raz-dva.cz) or to the municipal office in Kukljica.

**Pavel Konečný**  
publicist from the Czech Republic  
[konecny.p@raz-dva.cz](mailto:konecny.p@raz-dva.cz)

